



# CFX 100

## 1" x 1" End Suction Centrifugal Pump

The CFX 100 is a premium centrifugal pump engineered to handle demanding applications across marine, industrial, and commercial environments. Constructed from 316 investment-cast stainless steel, it offers outstanding resistance to corrosion and long-lasting durability, even when exposed to aggressive chemicals.

Designed for adaptability, this model incorporates a carbon/ceramic/Viton bellows shaft seal rated for 150 PSI (10.3 bar). Alternative seal options are available upon request to meet specific operational requirements. The pump features 1" NPT ports for straightforward system integration, and its rotation can be adjusted in 90° increments for flexible installation.

Delivering up to 40 GPM (9 m<sup>3</sup>/h) and supporting heads up to 54 feet (16.5 meters), the CFX 100 ensures efficient and reliable fluid transfer. It comes in multiple drive configurations, including close-coupled 115V AC, 230V AC, 24V DC, and pedestal-mounted versions, accommodating a wide range of power setups.

Ideal for agricultural, marine, industrial, and commercial applications, the CFX 100 combines robust construction with versatile design, making it a dependable choice for any fluid management system.

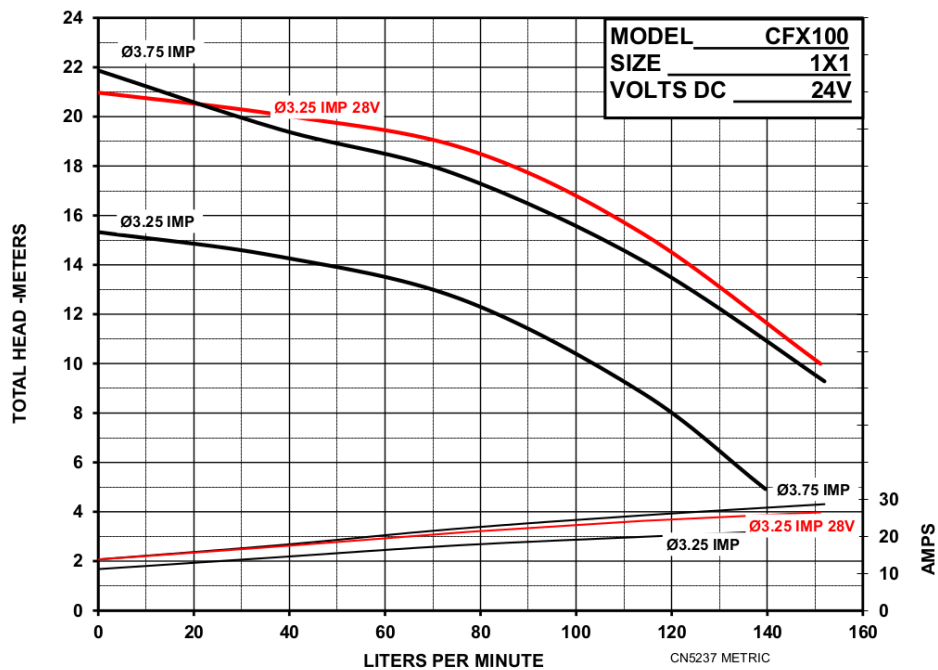
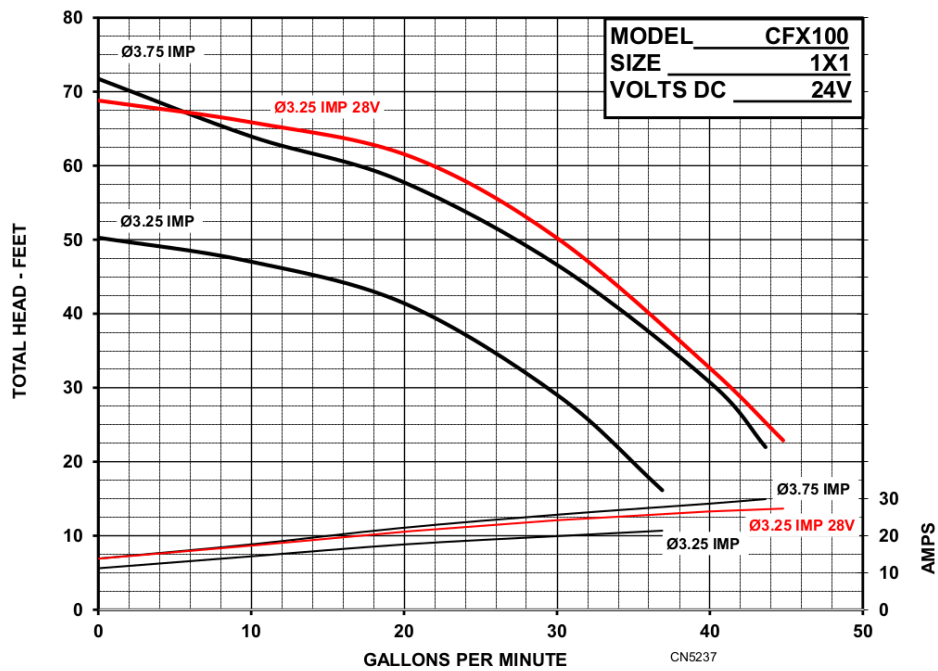
### SPECIFICATIONS:

<b>Suction / Discharge</b>	1" NPT x 1" NPT
<b>Materials of Construction</b>	316 stainless steel
<b>Flow</b>	Up to 40 GPM (9 m <sup>3</sup> /h)
<b>Head Feet</b>	Up to 54' (16 m)
<b>Impeller</b>	3.75" 316 stainless steel
<b>Drive Options</b>	Close coupled 115V AC Close coupled 230V AC Close coupled 24V DC Pedestal
<b>Seal</b>	Carbon / ceramic / Viton bellows 150 PSI (10 bar), Special seals upon request

### Application:

- Agricultural
- Commercial
- Industrial
- Marine

## PERFORMANCE CURVES

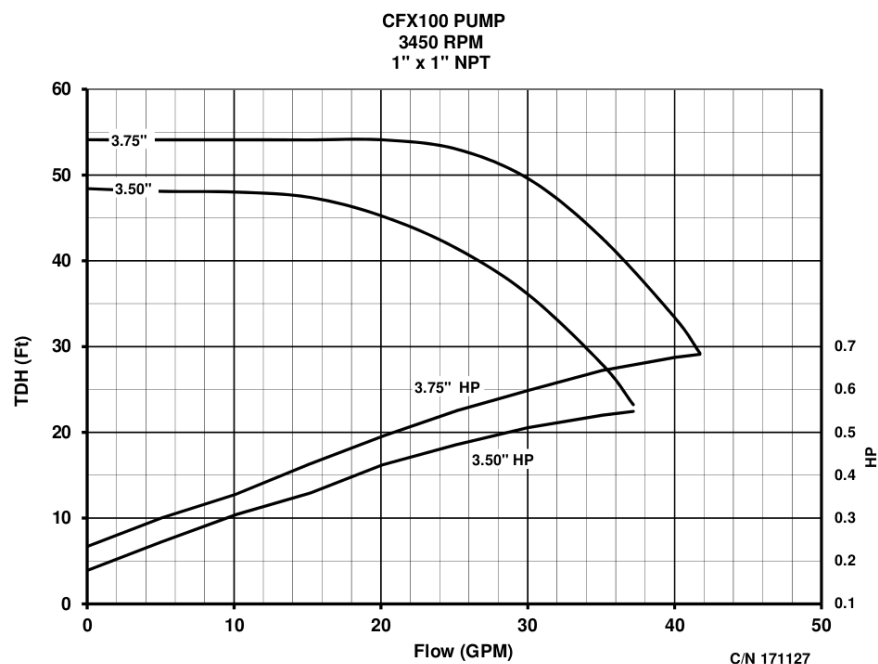




An Ingersoll Rand Business

# CFX100

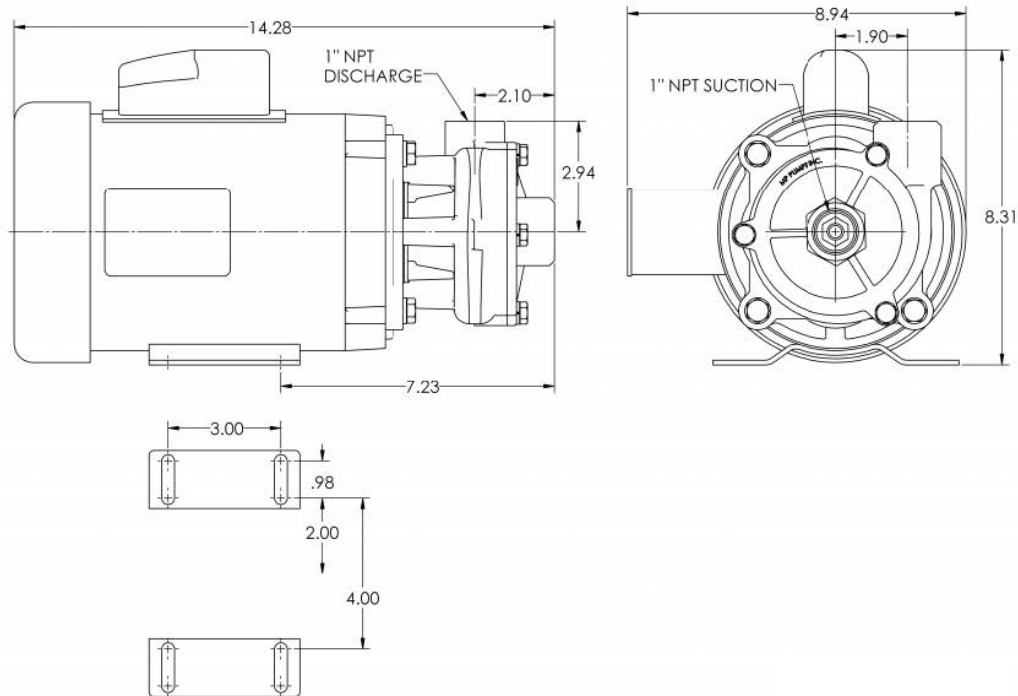
## PERFORMANCE CURVES



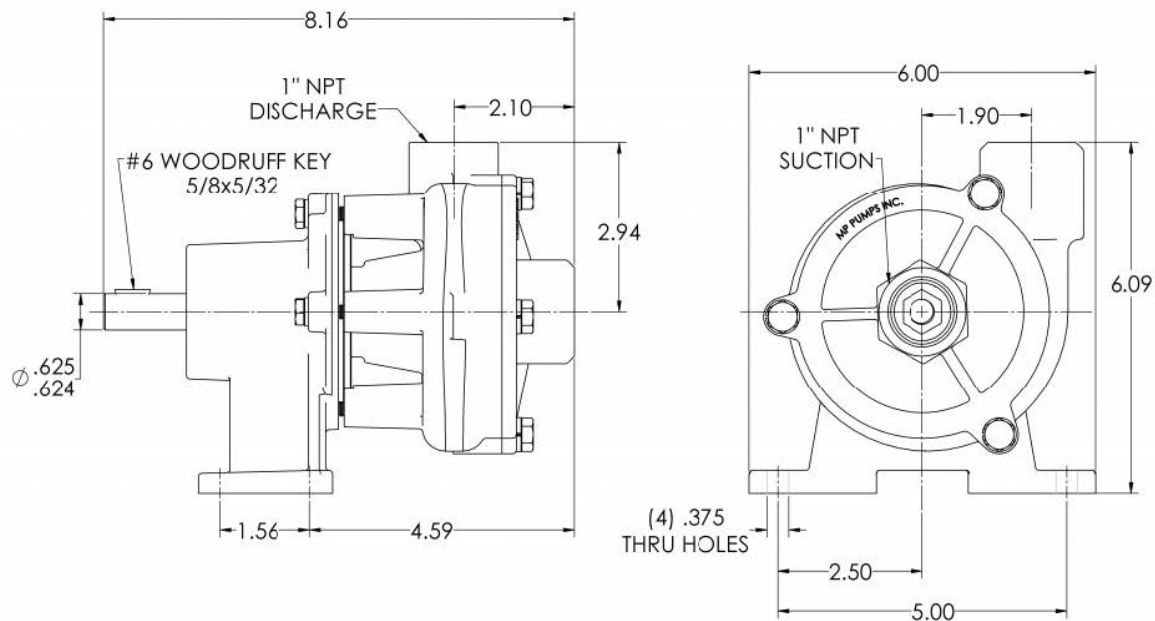
12500 South Pulaski Road  
Alsip, IL 60803, USA  
Phone (800) 563-8006

## DIMENSIONS

### CFX100 with AC Motor



### CFX100 Pedestal



\* For complete parts lists and troubleshooting guidance, please refer to the MP Pumps Installation Operation & Maintenance (IOM) Manual.